

# RIVESTIMENTI

UPHOLSTERY/ REVÊTEMENTS





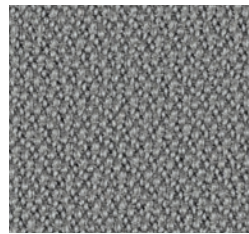
# CAT\_A

POLI

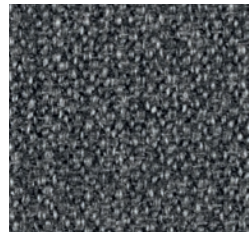
100% Polipropilene F.R.  
Peso: 250 gr/m<sup>2</sup>  
Martindale 50.000 cicli  
Ignifugo classe 1

100% Polypropylene F.R.  
Weight: 250 gr/m<sup>2</sup>  
Martindale 50.000 turns  
Fire-retardant class 1 (one)

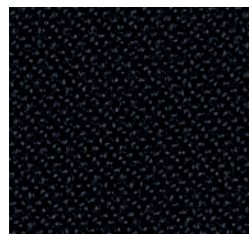
100% Polypropylene F.R.  
Poids: 250 gr/m<sup>2</sup>  
Martindale 50.000 cycles  
Ignifuge classe 1



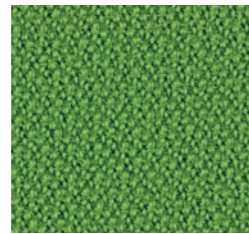
475 - Grigio  
Grey | Gris



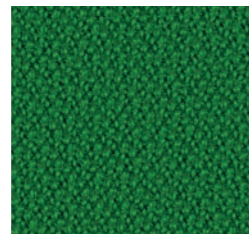
476 - Grigio Melange  
Melange Grey | Gris Mélange



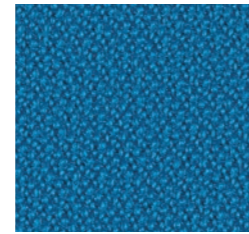
477 - Nero  
Black | Noir



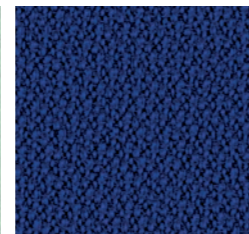
478 - Verde Chiaro  
Light Green | Vert Clair



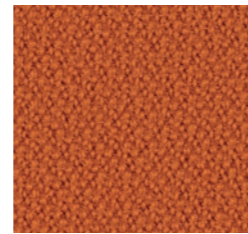
479 - Verde  
Green | Vert



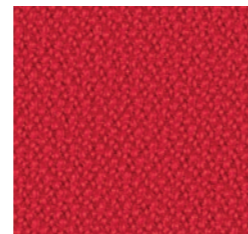
480 - Azzurro  
Azure | Azur



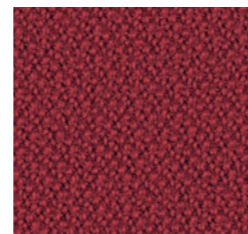
481 - Blu  
Blue | Bleu



482 - Arancio  
Orange | Orange



483 - Rosso  
Red | Rouge



484 - Bordeaux  
Bordeaux | Bordeaux

CHAIRS\_004

# CAT\_B

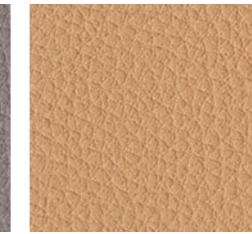
ECO-PELLE



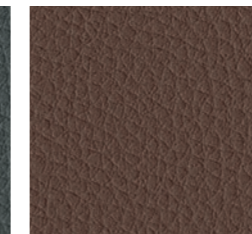
503 - Bianco  
White | Blanc



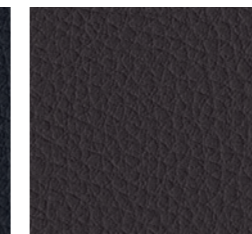
507 - Avorio  
Ivory | Ivoire



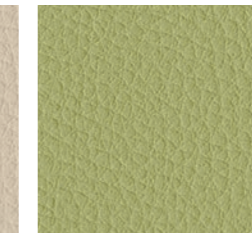
508 - Tabacco  
Tobacco | Tabac



509 - Marrone  
Brown | Marron



510 - Testa di Moro  
Dark Brown | Marron Foncé



511 - Verde Acido  
Acid Green | Vert Acide



512 - Muschio  
Moss Green | Vert Mousse



513 - Avio  
Navy Blue | Bleu Aviateur



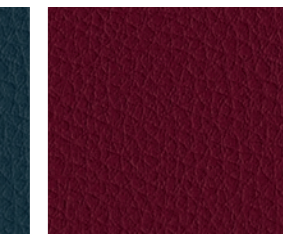
514 - Blu  
Blue | Bleu



515 - Giallo  
Yellow | Jaune



516 - Rosso  
Red | Rouge



517 - Granata  
Garnet | Grenat

CHAIRS\_005

Composizione fibrosa:  
65% Poliestere  
35% Cotone  
Composizione globale:  
85% PVC  
10% Poliestere  
5% Cotone  
Peso: 600 gr/m<sup>2</sup>  
Martindale 51.200 cicli  
Ignifugo classe 1

Fibrous composition  
65% Polyester  
35% Cotton  
Global composition:  
85% PVC  
10% Polyester  
5% Cotton  
Weight: 600 gr/m<sup>2</sup>  
Martindale 51.200 turns  
Fire-retardant class 1 (one)

Composition fibreuse:  
65% Polyester  
35% Coton  
Composition globale:  
85% PVC  
10% Polyester  
5% Coton  
Poids: 600 gr/m<sup>2</sup>  
Martindale 51.200 cycles  
Ignifuge classe 1

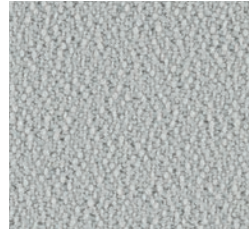
# CAT\_B

## CREPE

100% Poliestere  
FR-TREVIRA CS  
Peso: 330 gr/m<sup>2</sup>  
Martindale 100.000 cicli  
Ignifugo classe 1

100% Polyester  
FR-TREVIRA CS  
Weight: 330 gr/m<sup>2</sup>  
Martindale 100.000 turns  
Fire-retardant class 1 (one)

100% Polyester  
FR-TREVIRA CS  
Poids: 330 gr/m<sup>2</sup>  
Martindale 100.000 cycles  
Ignifuge classe 1



522 - Grigio Perla  
Light Grey | Gris Clair



525 - Avorio  
Ivory | Ivoire



523 - Grigio Scuro  
Dark Grey | Gris Foncé



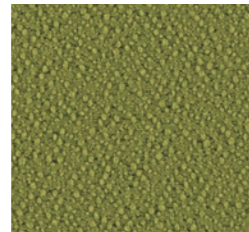
526 - Nocciola  
Hazel | Noisette



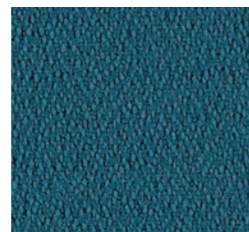
524 - Nero  
Black | Noir



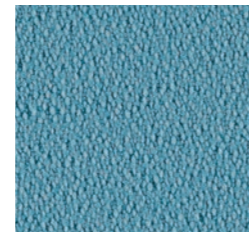
527 - Malto  
Malt | Malt



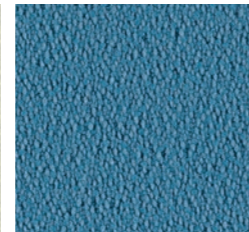
528 - Verde Acido  
Acid Green | Vert Acide



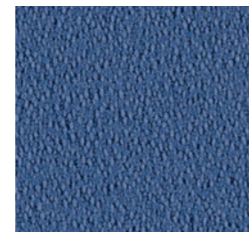
529 - Petrolio  
Petroleum | Huile



530 - Artico  
Arctic | Arctique



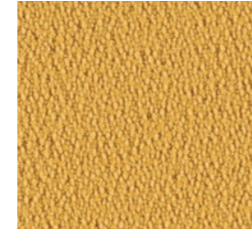
531 - Celeste  
Light Blue | Bleu Clair



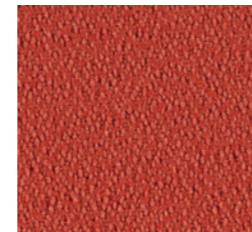
532 - Cobalto  
Cobalt | Cobalt



533 - Blu  
Blue | Bleu



534 - Giallo  
Yellow | Jaune



535 - Arancio  
Orange | Orange



536 - Vinaccio  
Wine Red | Rouge Vin



537 - Rosso  
Red | Rouge



538 - Prugna  
Plum | Prune

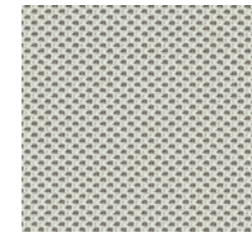
# CAT\_D

## STRETCH

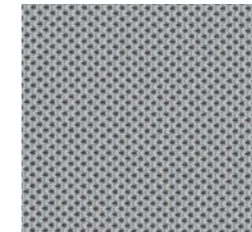
100% Poliestere  
FR RICICLATO  
Peso: 340 gr/m<sup>2</sup>  
Martindale 50.000 cicli  
Ignifugo classe 1

100% Polyester FR  
RECYCLED  
Weight: 340 gr/m<sup>2</sup>  
Martindale 50.000 turns  
Fire-retardant class 1 (one)

100% Polyester  
FR RECYCLÉ  
Poids: 340 gr/m<sup>2</sup>  
Martindale 50.000 cycles  
Ignifuge classe 1



585 - Avorio  
Ivory | Ivoire



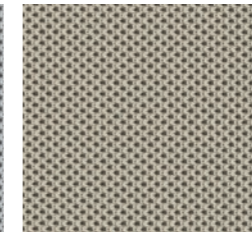
586 - Grigio  
Grey | Gris



587 - Antracite  
Anthracite | Anthracite



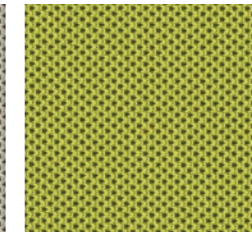
588 - Nero  
Black | Noir



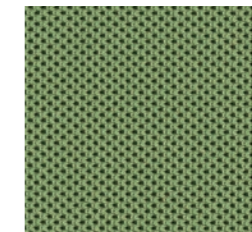
589 - Tortora  
Grey Beige | Gris Tourterelle



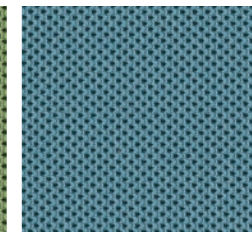
590 - Marrone  
Brown | Marron



591 - Verde Acido  
Acid Green | Vert Acide



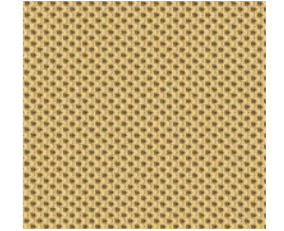
592 - Verde Bosco  
Wood Green | Vert Forêt



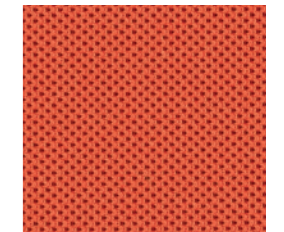
593 - Azzurro Sky  
Sky Blue | Bleu Sky



594 - Blu  
Blue | Bleu



595 - Giallo Fresia  
Freesia Yellow | Jaune Freesia



596 - Arancio  
Orange | Orange



597 - Rosso  
Red | Rouge



598 - Amaranto  
Amaranth | Amarante

# CAT\_D

## MELANGE

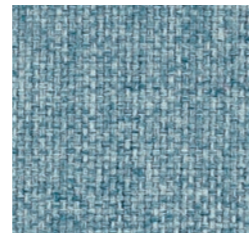
100% Poliestere  
FR RICICLATO  
Peso: 340 gr/m<sup>2</sup>  
Martindale 50.000 cicli  
Ignifugo classe 1

100% Polyester  
FR RECYCLED  
Weight: 340 gr/m<sup>2</sup>  
Martindale 50.000 turns  
Fire-retardant class 1 (one)

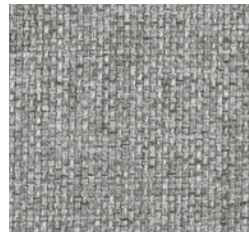
100% Polyester  
FR RECYCLÉ  
Poids: 340 gr/m<sup>2</sup>  
Martindale 50.000 cycles  
Ignifuge classe 1



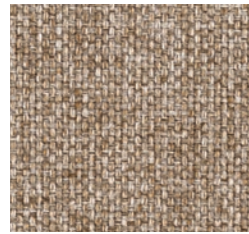
603 - Cenere  
Ash | Cendre



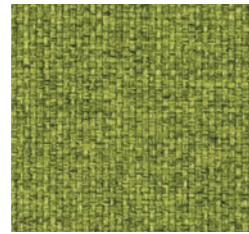
611 - Artico  
Arctic | Arctique



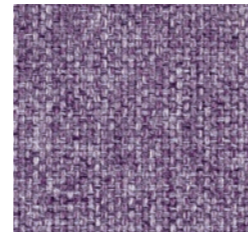
604 - Grigio  
Grey | Gris



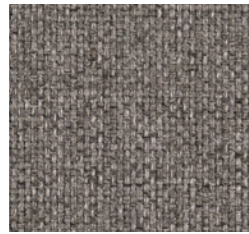
606 - Tortora  
Grey Beige | Gris Tourterelle



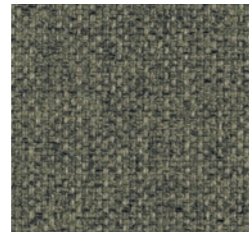
608 - Verde Acido  
Acid Green | Vert Acide



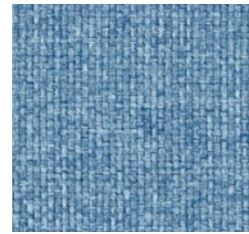
614 - Petunia  
Petunia | Pétunia



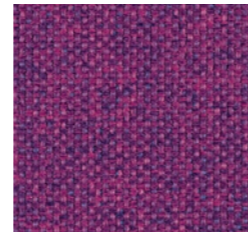
605 - Fumo  
Smoke | Fumée



609 - Muschio  
Moss Green | Vert Mousse



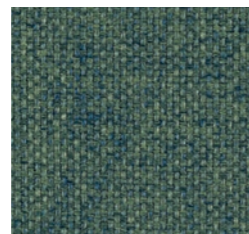
612 - Azzurro  
Azure | Azur



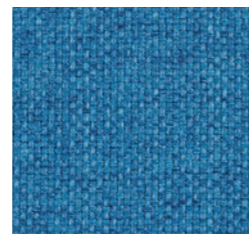
615 - Ribes  
Currant | Groseille



607 - Nocciola  
Hazel | Noisette



610 - Verdone  
Dark Green | Vert Foncé



613 - Cobalto  
Cobalt | Cobalt



616 - Granata  
Garnet | Grenat

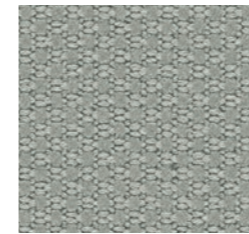
# CAT\_D

## TREVI

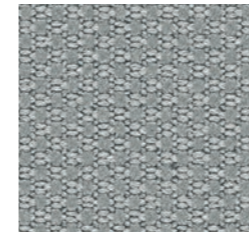
100% Poliestere FR  
TREVIRA CS  
Peso: 450 gr/m<sup>2</sup>  
Martindale 70.000 cicli  
Ignifugo classe 1

100% Polyester FR  
TREVIRA CS  
Weight: 450 gr/m<sup>2</sup>  
Martindale 70.000 turns  
Fire-retardant class 1 (one)

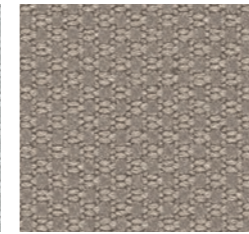
100% Polyester FR  
TREVIRA CS  
Poids: 450 gr/m<sup>2</sup>  
Martindale 70.000 cycles  
Ignifuge classe 1



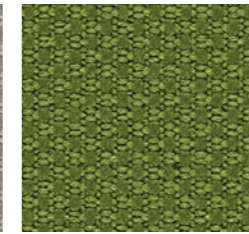
621 - Grigio  
Grey | Gris



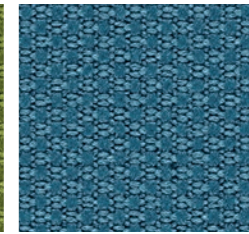
622 - Porfido  
Porphyry | Porphyre



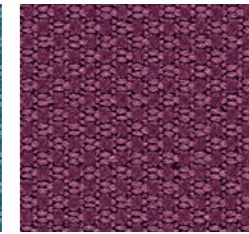
625 - Tortora  
Grey Beige | Gris Tourterelle



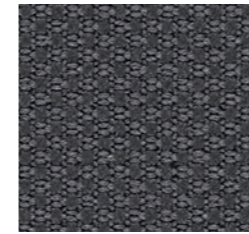
628 - Verde Acido  
Acid Green | Vert Acide



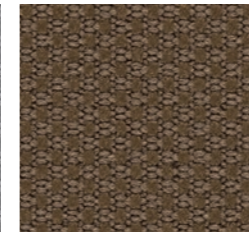
630 - Celeste  
Light Blue | Bleu Clair



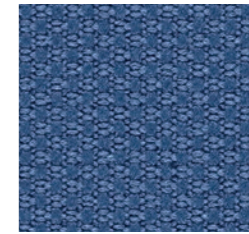
635 - Petunia  
Petunia | Pétunia



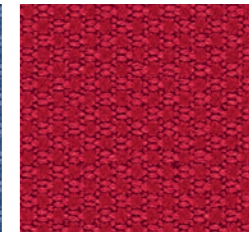
623 - Grigio Scuro  
Dark Grey | Gris Foncé



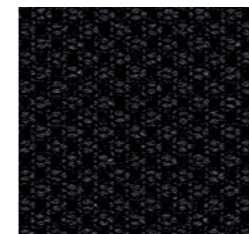
626 - Nocciola  
Hazel | Noisette



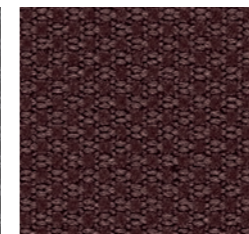
631 - Pervinca  
Periwinkle | Pervenche



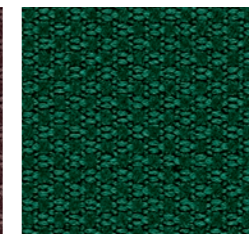
636 - Rosso  
Red | Rouge



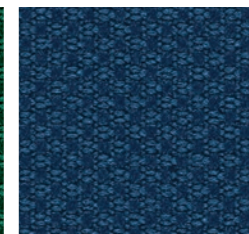
624 - Nero  
Black | Noir



627 - Marrone  
Brown | Marron



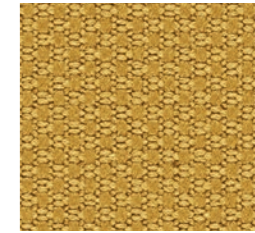
629 - Petrolio  
Petroleum | Pétrole



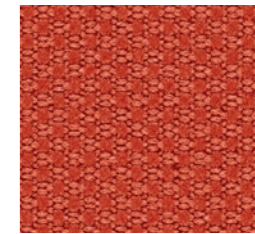
632 - Blu  
Blue | Bleu



637 - Amaranto  
Amaranth | Amarante



633 - Odra  
Ocher | Ocre



634 - Mattone  
Brick Red | Rouge Brique

La stampa ha carattere indicativo e potrebbe scostarsi leggermente dalla realtà | The printout is an example and may differ slightly from the actual product | L'impression a caractère indicatif et pourrait différer de la réalité

# CAT\_E

LANA

75% Lana  
25% Poliammide  
Peso: 335 gr/m<sup>2</sup>  
Martindale 100.000 cicli

75% Wool  
25% Polyamide  
Weight: 335 gr/m<sup>2</sup>  
Martindale 100.000 turns

75% Laine  
25% Polyamide  
Poids: 335 gr/m<sup>2</sup>  
Martindale 100.000 cycles



**649 - Artico**  
Arctic | Arctique



**642 - Grigio Chiaro**  
Light Grey | Gris Clair



**645 - Tortora**  
Grey Beige | Gris Tourterelle



**650 - Malibú**  
Malibu | Malibu



**653 - Ruggine**  
Russet | Rouille



**643 - Grigio Scuro**  
Dark Grey | Gris Foncé



**647 - Verde Acido**  
Acid Green | Vert Acide



**651 - Pervinca**  
Periwinkle | Pervenche



**654 - Mattone**  
Brick Red | Rouge Brique



**646 - Marrone**  
Brown | Marron



**648 - Muschio**  
Moss Green | Vert Mousse



**652 - Avio**  
Navy Blue | Bleu Aviateur



**655 - Fuoco**  
Fire Red | Rouge Feu



**644 - Fumo**  
Smoke | Fumée

# CAT\_E

CRAZY by Flukso

80% PVC  
18% Poliestere  
2% Fibra poliuretanic  
Peso: 600 gr/m<sup>2</sup>  
Abrasion 50.000 cicli  
Ignifugo classe 1

80% PVC  
18% Polyester  
2% Polyurethane fiber  
Weight: 600 gr/m<sup>2</sup>  
Abrasion 50.000 turns  
Fire-retardant class 1 (one)

80% PVC  
18% Polyester  
2% Fibres de polyuréthane  
Poids: 600 gr/m<sup>2</sup>  
Abrasion 50.000 cycles  
Ignifuge classe 1



**660 - Bianco**  
White | Blanc



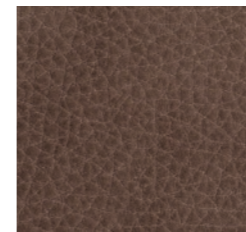
**661 - Grigio**  
Grey | Gris



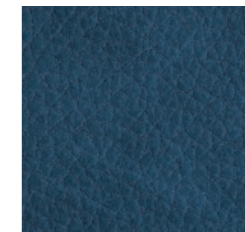
**663 - Beige**  
Beige | Beige



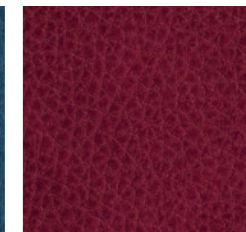
**665 - Oliva**  
Olive | Olive



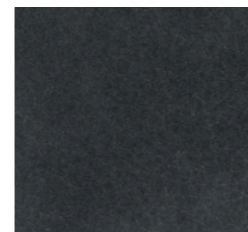
**664 - Tabacco**  
Tobacco | Tabac



**662 - Navy**  
Navy Blue | Bleu Aviateur



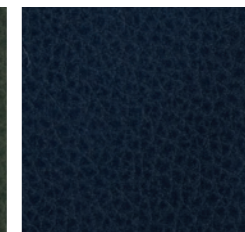
**669 - Rosso**  
Red | Rouge



**662 - Grafite**  
Graphite | Graphite



**666 - Alga**  
Seaweed | Algue



**668 - Blu**  
Blue | Bleu



**670 - Vinaccio**  
Wine Red | Rouge Vin

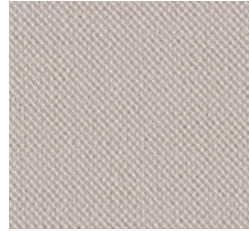
# CAT\_F

TAYLOR F.R. by Flukso

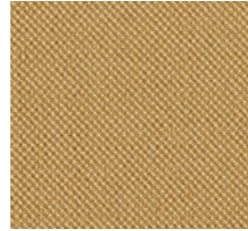
100% Poliestere  
Peso: 330 gr/m<sup>2</sup>  
Martindale 60.000 cicli  
Ignifugo classe 1

100% Polyester  
Weight: 330 gr/m<sup>2</sup>  
Martindale 60.000 turns  
Fire-retardant class 1 (one)

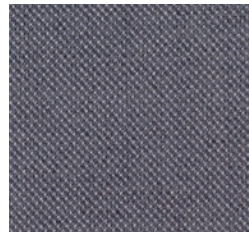
100% Polyester  
Poids: 330 gr/m<sup>2</sup>  
Martindale 60.000 cycles  
Ignifuge classe 1



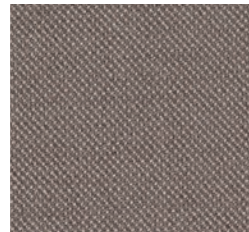
689 - Marna  
Marl | Marne



699 - Odra  
Ocher | Ocre



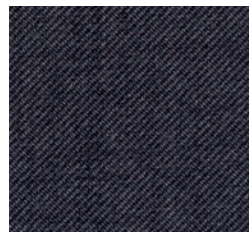
690 - Grigio Scuro  
Dark Grey | Gris Foncé



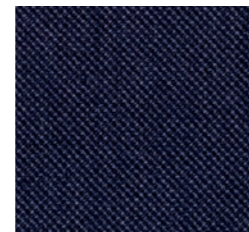
693 - Tortora  
Grey Beige | Gris Tourterelle



695 - Oliva  
Olive | Olive



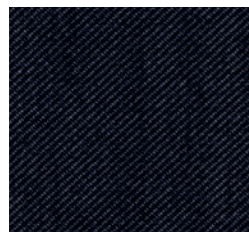
691 - Grafite  
Graphite | Graphite



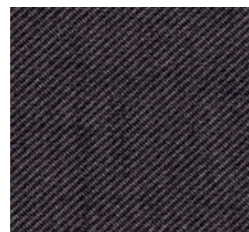
697 - Avio  
Navy Blue | Bleu Aviateur



702 - Rosso  
Red | Rouge



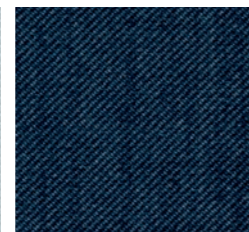
692 - Nero  
Black | Noir



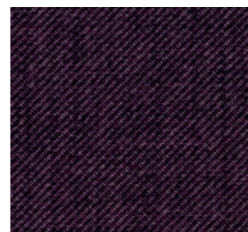
694 - Tabacco  
Tobacco | Tabac



696 - Petrolio  
Petroleum | Pétrole



698 - Blu Notte  
Night Blue | Bleu Nuit



703 - Vinaccio  
Wine Red | Rouge Vin

CHAIRS\_ 012

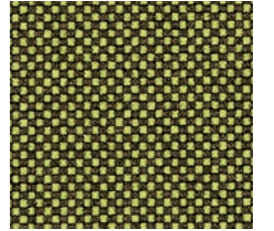
# CAT\_G

GO CHECK by Gabriel

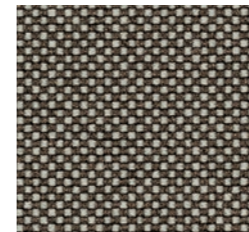
100% Trevira CS  
Peso: 310 gr/m<sup>2</sup>  
Martindale 80.000 cicli  
Ignifugo classe 1

100% Trevira CS  
Weight: 310 gr/m<sup>2</sup>  
Martindale 80.000 turns  
Fire-retardant class 1 (one)

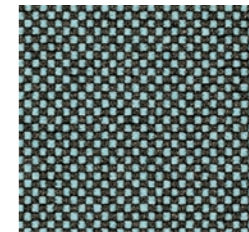
100% Trevira CS  
Poids: 310 gr/m<sup>2</sup>  
Martindale 80.000 cycles  
Ignifuge classe 1



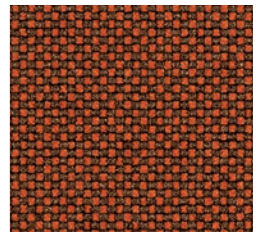
748 - Giallo  
Yellow | Jaune



738 - Beige  
Beige | Beige



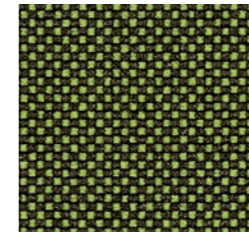
744 - Azzurro  
Azure | Azur



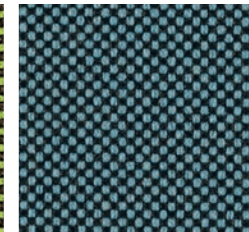
749 - Arancio  
Orange | Orange



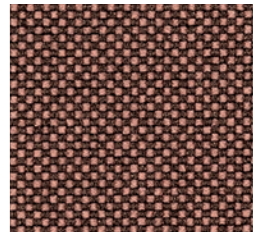
739 - Fango  
Mud | Boue



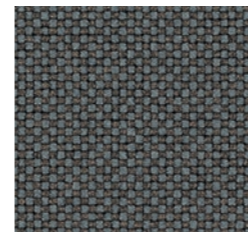
741 - Verde  
Green | Vert



745 - Turchese  
Turquoise | Turquoise



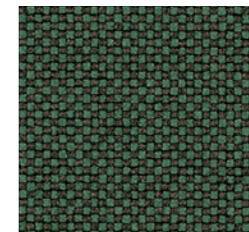
750 - Pesca  
Peach | Pêche



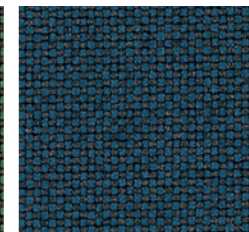
736 - Grigio  
Grey | Gris



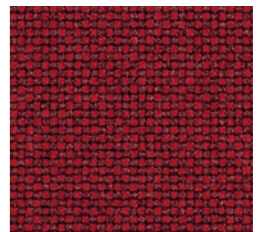
740 - Cacao  
Cocoa | Cacao



742 - Prato  
Lawn | Pelouse



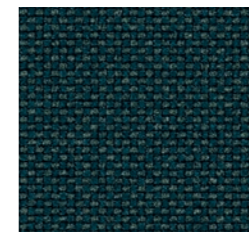
746 - Mare  
Sea | Mer



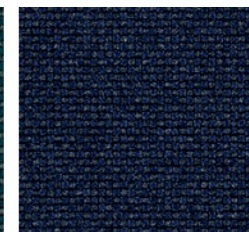
751 - Rosso  
Red | Rouge



737 - Nero  
Black | Noir



743 - Bottiglia  
Bottle | Bouteille



747 - Blu  
Blue | Bleu



752 - Amaranto  
Amaranth | Amarante

CHAIRS\_ 013

La stampa ha carattere indicativo e potrebbe scostarsi leggermente dalla realtà  
The printout is an example and may differ slightly from the actual product | L'impression a caractère indicatif et pourrait différer de la réalité

# CAT\_G

RUNNER by Gabriel

100% Poliestere  
Peso: 319 gr/m<sup>2</sup>  
Martindale 70.000 cicli  
Ignifugo classe 1

100% Polyester  
Weight: 319 gr/m<sup>2</sup>  
Martindale 70.000 turns  
Fire-retardant class 1 (one)

100% Polyester  
Poids: 319 gr/m<sup>2</sup>  
Martindale 70.000 cycles  
Ignifuge classe 1



757 - Bianco  
White | Blanc



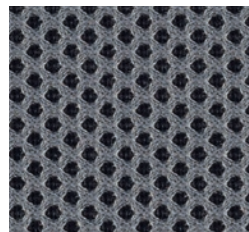
COD.  
761 - Beige  
Beige | Beige



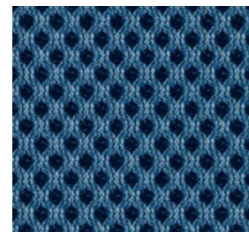
COD.  
763 - Verde  
Green | Vert



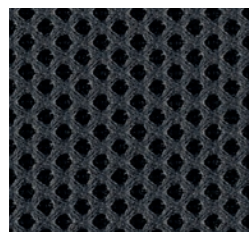
COD.  
767 - Arancio  
Orange | Orange



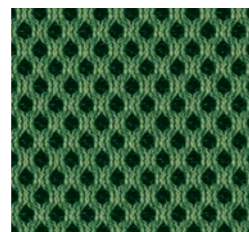
758 - Acciaio  
Steel | Acier



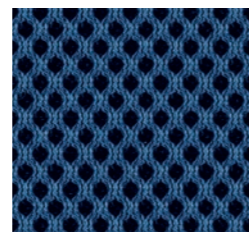
765 - Turchese  
Turquoise | Turquoise



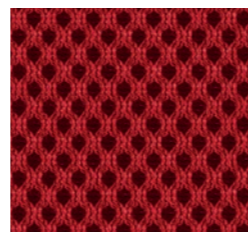
759 - Grafite  
Graphite | Graphite



764 - Prato  
Lawn | Pelouse



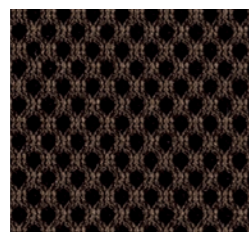
766 - Mare  
Sea | Mer



768 - Rosso  
Red | Rouge



760 - Nero  
Black | Noir



762 - Marrone  
Brown | Marron

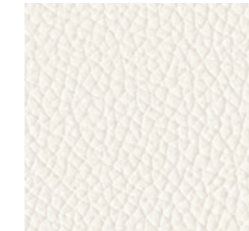
# CAT\_H

PELLE

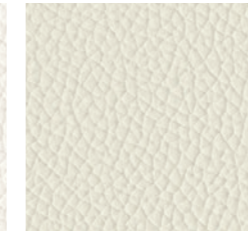
100% Pelle Bovina,  
smerigliata e stampata.  
Spessore 0,8 - 1,0 mm.  
Eventuali imperfezioni,  
graffi e cicatrici presenti  
nella pelle non devono  
essere considerati difetti,  
ma pregi e caratteristiche  
di garanzia e autenticità  
della vera pelle.

100% cowhide,  
sanded and printed.  
Thickness 0.8 - 1.0 mm.  
Possible leather scratches  
and marks are not to be  
considered imperfections but  
a guarantee of its quality and  
authenticity.

100% cuire de bovins,  
poncé et imprimé.  
Épaisseur: 0,8 - 1,0 mm.  
Les éventuelles imperfections,  
égratignures ou cicatrices  
présentes dans le cuir ne  
sont pas des défauts, mais  
des marques naturelles, une  
garantie de l'authenticité  
du vraicuir.



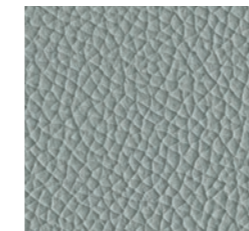
773 - Bianco  
White | Blanc



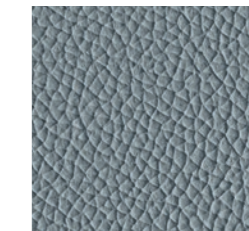
777 - Latte  
Milk | Lait



787 - Ananas  
Pineapple | Ananas



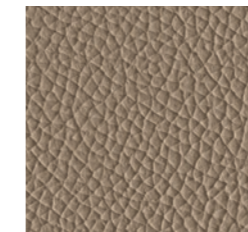
774 - Acqua  
Water | Eau



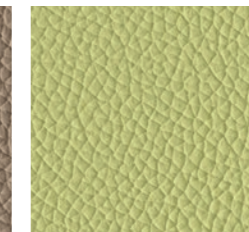
784 - Piombo  
Lead | Plomb



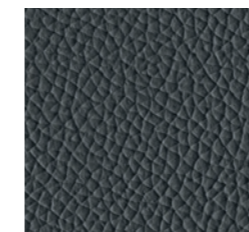
788 - Arancio  
Orange | Orange



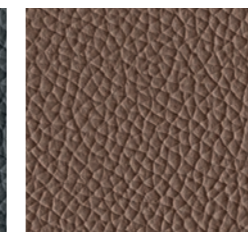
778 - Pietra  
Stone | Pierre



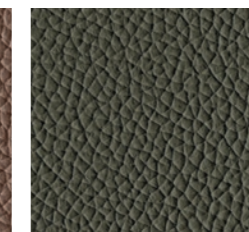
781 - Lime  
Lime | Lime



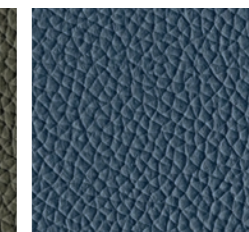
775 - Ardesia  
Slate | Ardoise



779 - Fango  
Mud | Boue



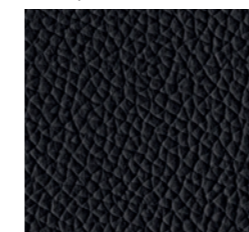
782 - Muschio  
Moss Green | Vert Mousse



785 - Blu Notte  
Night Blue | Bleu Nuit



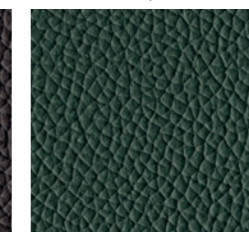
789 - Rosso  
Red | Rouge



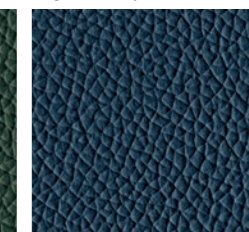
776 - Nero  
Black | Noir



780 - Testa di Moro  
Dark Brown | Marron Foncé



783 - Verdone  
Dark Green | Vert Foncé



786 - Oceano  
Ocean | Océan



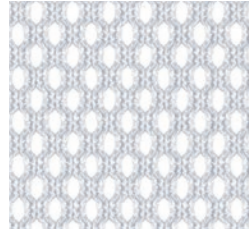
790 - Granata  
Garnet | Grenat



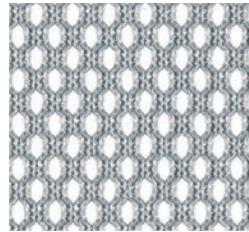
# RETE\_ R1

×

## RETE ROUND



**301 - Bianco**  
White | Blanc



**302 - Grigio**  
Grey | Gris



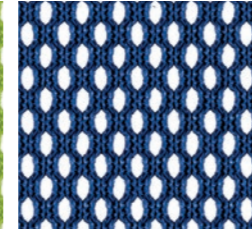
**303 - Nero**  
Black | Noir

100% Poliestere  
Peso: 510 gr/m<sup>2</sup>  
Martindale 60.000 cicli



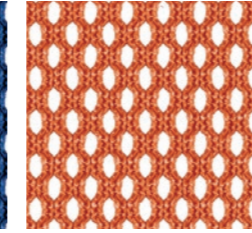
**308 - Verde**  
Green | Vert

100% Polyester  
Weight: 510 gr/m<sup>2</sup>  
Martindale 60.000 turns

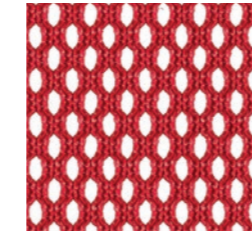


**305 - Bluette**  
Bluette | Bluette

100% Polyester  
Poids: 510 gr/m<sup>2</sup>  
Martindale 60.000 cycles



**306 - Arancio**  
Orange | Orange



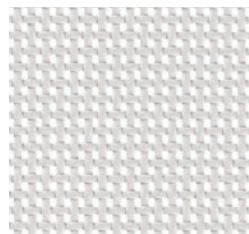
**307 - Rosso**  
Red | Rouge

× solo per schienale  
for backrest only  
seulement pour dossier  
**SISTEMA RETE**  
**CAST RETE**  
**F03 RETE**

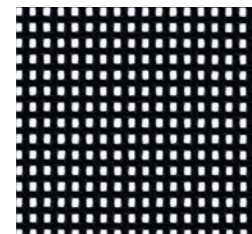
# RETE\_ R2

△

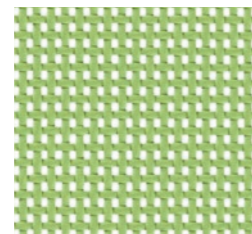
## RETE BREAK



**310 - Bianco**  
White | Blanc



**312 - Nero**  
Black | Noir



**311 - Verde**  
Green | Vert

70% PVC  
30% Poliestere  
Peso: 560 gr/m<sup>2</sup>  
Martindale 100.000 cicli

70% PVC  
30% Polyester  
Weight: 560 gr/m<sup>2</sup>  
Martindale 100.000 turns

70% PVC  
30% Polyester  
Poids: 560 gr/m<sup>2</sup>  
Martindale 100.000 cycles

△ solo per schienale  
for backrest only  
seulement pour dossier  
**HELLÒ RETE**  
**CIAK RETE**

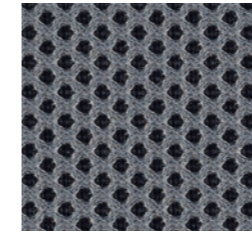
# RETE\_ R3

○

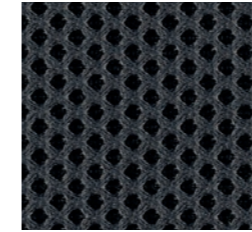
## RETE GABRIEL



**757 - Bianco**  
White | Blanc



**758 - Acciaio**  
Steel | Acier



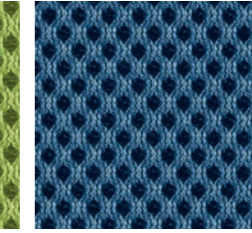
**759 - Grafite**  
Graphite | Graphite

100% Poliestere  
Peso: 319 gr/m<sup>2</sup>  
Martindale 70.000 cicli  
Ignifugo classe 1



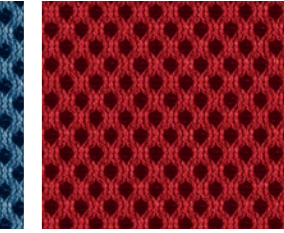
**763 - Verde**  
Green | Vert

100% Polyester  
Weight: 319 gr/m<sup>2</sup>  
Martindale 70.000 turns  
Fire-retardant class 1 (one)



**765 - Turchese**  
Turquoise | Turquoise

100% Polyester  
Poids: 319 gr/m<sup>2</sup>  
Martindale 70.000 cycles  
Ignifuge classe 1



**768 - Rosso**  
Red | Rouge

○ solo per schienale  
for backrest only  
seulement pour dossier  
**OSCAR RETE**

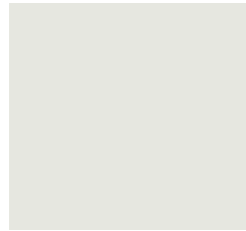
# TEC\_T1

Mod. F01

100% Polipropilene

100% Polypropylene

100% Polypropylene



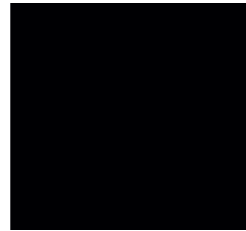
**912 - Bianco**  
White | Blanc  
(RAL 9003)



**940 - Verde**  
Green | Vert  
(PANTONE 7495 EC)



**913 - Rosso**  
Red | Rouge  
(RAL 3000)



**950 - Nero**  
Black | Noir  
(RAL 9005)

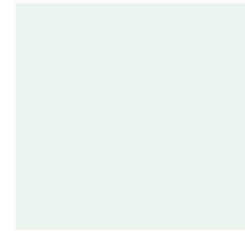
# TEC\_T3

Mod. F03

100% Polipropilene

100% Polypropylene

100% Polypropylene



**912 - Bianco**  
White | Blanc



**950 - Nero**  
Black | Noir

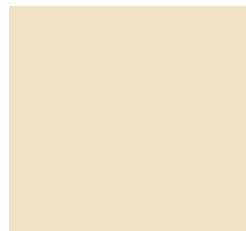
# TEC\_T2

Mod. F02

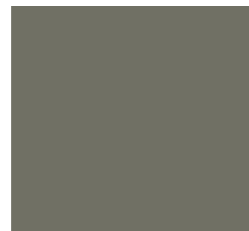
100% Polipropilene

100% Polypropylene

100% Polypropylene



**916 - Avorio**  
Ivory | Ivoire  
(RAL 1013)



**917 - Tortora**  
Grey Beige | Gris Tourterelle  
(RAL 7003)



**918 - Giallo**  
Yellow | Jaune  
(RAL 1012)

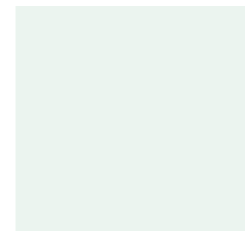
# TEC\_T4

Mod. F04

100% Polipropilene

100% Polypropylene

100% Polypropylene



**912 - Bianco**  
White | Blanc



**914 - Crema**  
Cream | Crème



**915 - Petrolio**  
Petroleum | Pétrole



**950 - Nero**  
Black | Noir

LEGNI | WOOD | BOIS

○ Melaminico  
Melamine  
Melamine  
△ 3D Foil



METALLO | METAL | MÉTAL



VETRI | GLASS | VITRE



**AD\_**

Arch. Paolo Pampanoni

**Rendering\_**

Matic®

**Foto\_**

lucidiffuse.it

**Progetto grafico\_**

d+a

**Fotolito\_**

Selecolor Firenze

**Stampa\_**

Grafiche Martintype



**Las Mobili s.r.l**

Via dell'Industria, n°81  
64018 Tortoreto (TE) - Italy  
T. +39. 0861 7831  
F. +39. 0861 786851  
[las@las.it](mailto:las@las.it) - [www.las.it](http://www.las.it)